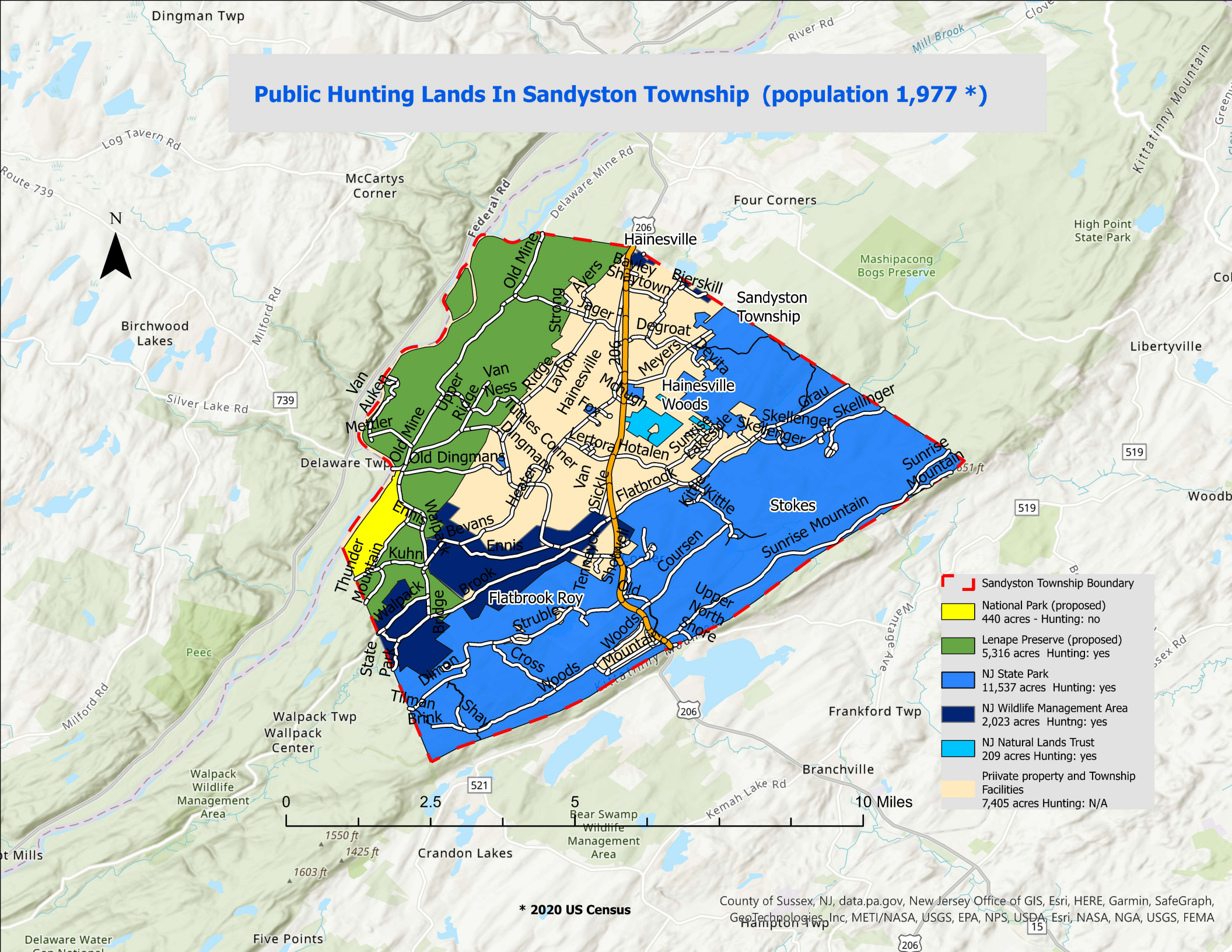
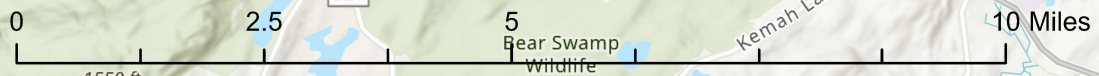


Public Hunting Lands In Sandyston Township (population 1,977 *)



- Sandyston Township Boundary
- National Park (proposed)
440 acres - Hunting: no
- Lenape Preserve (proposed)
5,316 acres Hunting: yes
- NJ State Park
11,537 acres Hunting: yes
- NJ Wildlife Management Area
2,023 acres Hunting: yes
- NJ Natural Lands Trust
209 acres Hunting: yes
- Private property and Township
Facilities
7,405 acres Hunting: N/A



* 2020 US Census

County of Sussex, NJ, data.pa.gov, New Jersey Office of GIS, Esri, HERE, Garmin, SafeGraph, GeoTechnologies, Inc, METI/NASA, USGS, EPA, NPS, USDA, Esri, NASA, NGA, USGS, FEMA